

FAST SOFT-RECOVERY RECTIFIER DIODES

Silicon double-diffused rectifier diodes in plastic envelopes. They are intended for use in chopper applications as well as in switched-mode power supplies, as efficiency diodes and scan rectifiers in television receivers. The devices feature non-snap-off characteristics. Normal and reverse polarity types are available.

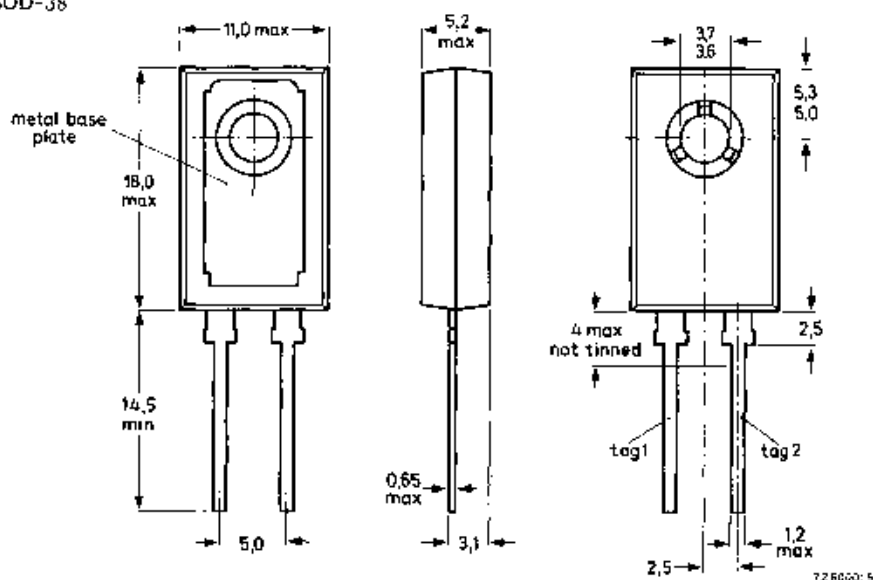
QUICK REFERENCE DATA

		BYX71-350(R)		600(R)	
		max.	350	600	
Repetitive peak reverse voltage	V_{RRM}				V
Average forward current	$I_F(AV)$	max.	7		A
Non-repetitive peak forward current	I_{FSM}	max.	60		A
Reverse recovery time	t_{rr}	<	450		ns

MECHANICAL DATA (see also page 2)

Dimensions in mm

SOD-38



The exposed metal base-plate is directly connected to tag 1.

MECHANICAL DATA (continued)

Net mass: 2,5 g

Recommended diameter of fixing screw: 3,5 mm

Torque on screw

when using washer and heatsink compound: min. 0,95 Nm (9,5 kg cm)
max. 1,5 Nm (15 kg cm)

Accessories:

supplied with the device: 56355 (washer)

available on request: 56316 (mica insulating washer)

POLARITY OF CONNECTIONS

	BYX71-350 and BYX71-600	BYX71-350R and BYX71-600R
Base-plate ;	cathode	anode
Tag 1 :	cathode	anode
Tag 2 :	anode	cathode